



**Berkeley Yacht Club**  
1 Seawall Drive, Berkeley, CA 94710  
<http://www.berkeleyyc.org>

**SAILING INSTRUCTIONS**  
**2016 BYC Tri-Island Race Series**  
**June 5, July 10, August 9**

**1.0 RULES:** The regatta will be governed by the Racing Rules of Sailing 2013-2016, the prescriptions of USSailing, the Northern California PHRF rules, the Notice of Race and these Sailing Instructions. RRS 75.1 requiring membership in a yacht or sailing club is waived. The regatta is designated as Advertising Category A.

**2.0 ELIGIBILITY:** Eligibility is defined in the Notice of Race.

**3.0 NOTICES TO COMPETITORS:** Any notices will be posted on the Race Bulletin Board located on the South wall in the bar area of Berkeley Yacht Club and on the BYC website: <http://www.berkeleyyc.org>.

**4.0 SAIL NUMBERS:** Prior to the start of any of the races, it shall be the responsibility of each competitor to notify the Race Committee of any sails to be flown with a number differing from that specified on her entry form. Finishing yachts failing to make such notification may not be scored.

**5.0 SCHEDULE OF RACES:**

5.1 These are "pursuit races," with the slowest rated yachts starting first. The Warning Signal will be at 1155 hours. It will be synchronized to WWV as closely as possible. If a postponement is deemed necessary, the new Warning will be on an integral multiple of 5-minute intervals thereafter, and will be announced on VHF 72.

5.2 The island to be rounded and therefore the calculated distances are different for each day of the series. Thus, the starting times for each competitor are different for each day of the series.

5.3 See sections 14.0 and 16.0 for distances and assigned starting times.

**6.0 SCORING:** The Time-On-Distance method is used to assign starting times, whereupon Scoring will be via finishing order. See Notice of Race for complete description of ratings.

**7.0 TROPHIES:** Trophies will be awarded no later than 17:00 on the day of the race.

**8.0 RESTRICTED AREAS:**

8.1 The ruins of the Berkeley Pier and the lines between the closest associated shore to the following shall be considered as obstructions: the bell buoy off the Northwest end of Alcatraz Island and the outer most rocks off Point Blunt (extending to any buoy marking same). Furthermore, if any part of a yacht or her equipment crosses any of these obstructions, she shall not correct, as per RRS 28.1. Instead she shall be considered to have violated a rule of RRS Part 2, and shall act in accordance with RRS 44.1 and 44.2 (Two turns penalty).

**8.2 NOTE: The navigable channel at the end of the fishing pier portion of the Berkeley Pier is NOT restricted.**

**9.0 RESTRICTED LINE:** After the starting sequence has begun, only yachts preparing to start shall sail closer than 200 feet from the start line.

**10.0 START, FINISH LINES AND COMMUNICATION:**

10.1 The start line will be between the BYC buoy (approximate location: 37-52.0268N X 122-19.499W) and a temporary orange inflatable or ball anchored approximately 400m Southwest of the BYC buoy. If the BYC buoy is missing, a temporary inflatable or orange ball will be used.

10.2 The finish line will be between an orange flag on the northwest corner of the Berkeley Yacht Club and the speed limit sign on the opposite side of the marina entrance.

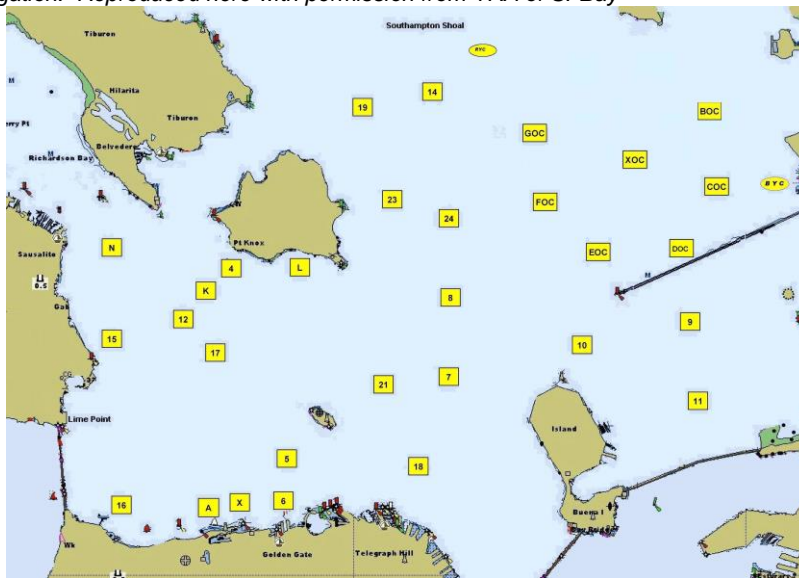
10.3 The Committee will use VHF 72.

**11.0 INDIVIDUAL RECALL:** There will be no individual recalls for over-early competitors. Flagrant violations will be dealt with in the bar area of Berkeley Yacht Club.

**12.0 INTERFERENCE WITH COMMERCIAL VESSELS:** Yachts shall not impede the passage of ship traffic while racing. Rule 9 of the Inland Rules of the Road applies with respect to all shipping traffic on San Francisco Bay and its tributaries. A violation of Rule 9 is subject to protest by any competitor and or the race committee. Compliance with RRS 60-63 will not be required with respect to a protest involving a Rule 9 infraction. A violation of Rule 9 may not be exonerated by an alternate penalty.

**13.0 PROTESTS:** Protests shall be submitted to the Race Committee in writing within 90 minutes after the protesting yacht finishes or withdraws. Protest hearings shall begin approximately 90 minutes after the last yacht finishes.

*A chartlet - not to be used for navigation. Reproduced here with permission from YRA of SFBay*



**14.0 COURSES and DATES:** (See chartlet) The designated island may be rounded to port or starboard. See Section 10 for definition of start and finish lines.

<b>June 5, 2016:</b> Start, Alcatraz Island, Finish (See Section 16.1)	11.3 nm
<b>July 10, 2016:</b> Start, Treasure Island, Finish (See Section 16.2)	10.7 nm
<b>August 14, 2016:</b> Start, Angel Island, Finish (See Section 16.3)	12.8 nm

**15.0 TIME LIMIT:** Yachts finishing after 1700 hours will be scored DNF.

**16.0 START SIGNALS AND TIMES:** See next pages.