



**SAILING INSTRUCTIONS**  
**(ISSUED NOVEMBER, 2016)**

**2016-2017 MIDWINTER SERIES ON THE OLYMPIC CIRCLE**  
**SPONSORED BY**  
**BERKELEY YACHT CLUB**

**RACE DATES: NOV. 12/13, '16 DEC. 10/11, '16 JAN. 14/15, '17 FEB. 11/12, '17**  
**CHAMPION OF CHAMPIONS-WINNERS RACE: Feb. 26, 2017**

**1.0 RULES:**

- 1.1 The regatta will be governed by the Racing Rules of Sailing, the prescriptions of US Sailing, the Northern California PHRF rules, the Notice of Race and these Sailing Instructions. RRS 75.1 requiring membership in a yacht or sailing club is waived. The regatta is designated as Advertising Category A.
- 1.2 Express 27 Class only: RRS 44.1 is modified as follows: A boat may take a penalty when she may have broken a rule of Part 2 or rule 31 while racing. The penalty shall be a One-Turn Penalty unless she may have broken a rule of Part 2 while racing within the zone of a rounding or finishing mark in which case the penalty shall be a Two-Turns Penalty.

**2.0 NOTICES TO COMPETITORS:** Any notices will be posted on the Race Bulletin Board located on the South wall in the bar area of Berkeley Yacht Club and on the BYC website: <http://www.berkeleyyc.org>

**3.0 CHANGES IN SAILING INSTRUCTIONS:** Any change in these instructions will be posted before 0930 hours on the day it will take effect and will be available from the Race Committee boat before the 1<sup>st</sup> Warning Signal.

**4.0 SAIL NUMBERS:** Prior to the start of any of the races, it shall be the responsibility of each competitor to notify the Race Committee of any sails to be flown with a number differing from that specified on her entry form. Finishing yachts failing to make such notification may not be scored.

**5.0 START/FINISH LINE:** The Start/ Finish will be a line between the Olympic Circle Buoy "XOC" and an orange flag on the committee boat. After the first Warning signal, this line is restricted except when preparing to start, starting or finishing. Yachts infringing this line will be penalized one place. It is requested that Racers anchor any "tenders" more than ½ mile from XOC.

**6.0 CLASSES AND DIVISIONS:**

- 6.1 ONE DESIGN CLASSES: One design classes having 5 or more entries will be scored separately as a class. Class rules shall be those on file with YRA or as set by the members of the class.
- 6.2 HANDICAP DIVISIONS: A yacht not competing in a one design class will be assigned to an appropriate PHRF division.

**7.0 GENERAL RECALL:** Recall of an entire starting division will be signaled by the display of the First Substitute Code Pennant and two sound signals. The First Substitute will be removed with one sound signal, one minute before a new Warning Signal is made for the restart. All succeeding divisions shall follow the new start. If there is a second General Recall for a division, that group will start after the last scheduled division.

**8.0 DISPOSAL OF WASTE OR TRASH:** Boats observed breaking RRS 55 are subject to protest only by the Race Committee or Protest Committee. The penalty for a breach of this rule, which may include disqualification from a race, is at the discretion of the Protest Committee. Discarding elastic or wool bands when setting a sail is permitted. This changes RRS 55, 60.1(a) and 64.1.

## **9.0 SCORING:**

**9.1** The Low Point Scoring, RRS A4.1 will be used to score finishing boats. RRS A4.2 is modified to state that penalty points will be added to the number of boats that came to the starting area: plus one for DNF, OCS, DNS or RAF (prior to protest hearing), plus two for DNC, and plus three for DSQ. Cancelled races will not be rerun. Ties will be broken as per RRS A8. RRS A9 is deleted.

**9.2** The Time-on-Time method will be used for scoring. Each entrant's Time Correction Factor (TCF) will be calculated using the formula:  $TCF = (650 / (550 + PHRF))$

**10.0 PROTESTS:** Protests shall be mailed to Race Committee, Robert B. Gray, 3837 LaCresta Ave., Oakland, CA 94602. Protests which are postmarked no later than the Tuesday following the race are presumed to be timely filed. Later postmarked protests are conclusively presumed to be not timely filed. Protests delivered to Berkeley Yacht Club will not be considered properly filed. Parties to the protest will be notified of the time and place of the hearing.

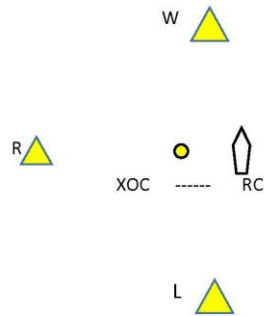
**11.0 TROPHIES:** Series trophies will be awarded to each class and division. There is no throw out for either series (Changes RRS A2). All trophies will be awarded on February 26, 2017 at BYC, following the Champion of Champions & Trophy Winner's Race.

**12.0 TIME LIMIT:** Yachts finishing after **1700 hours** will be scored DNF.

**13.0 COMMUNICATIONS:** The Race Committee will use **VHF 72** for communications

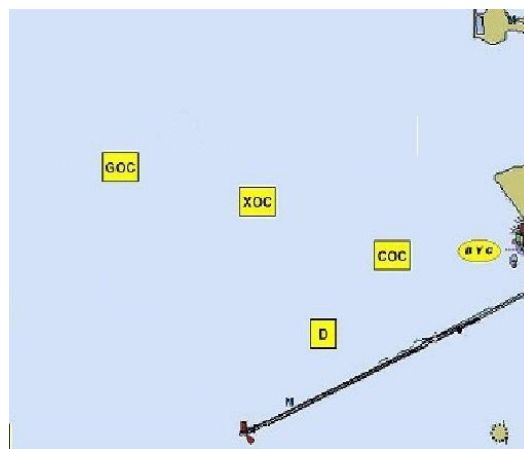
**14.0 COURSES:** Courses will be signaled by Numeral Pennant. All marks must be rounded to port.

*(a course diagram for courses 1, 2, 3 & 4)*



- |                                 |                  |
|---------------------------------|------------------|
| 1) Start, W, L, Finish          | 4.0 nm (approx.) |
| 2) Start, W, L, W, L, Finish    | 8.0 nm (approx.) |
| 3) Start, W, R, L, Finish       | 4.8 nm (approx.) |
| 4) Start, W, R, L, W, L, Finish | 8.8 nm (approx.) |

*(a small chartlet – Not to be used for navigation)*



- |                              |        |
|------------------------------|--------|
| 5) Start, C, G, C, G, Finish | 8.0 nm |
| 6) Start, C, G, Finish       | 4.0 nm |
| 7) Start, G, C, G, C, Finish | 8.0 nm |
| 8) Start, G, C, Finish       | 4.0 nm |

**15.0 MARKS:**

**W:** A green inflatable buoy labelled “BYC”, set as the Windward mark. (Range and bearing to be announced via VHF 72.)

**L:** An inflatable buoy labelled “BYC”, set as the Leeward mark

**R:** An inflatable buoy labelled “BYC”, set as a Reaching mark.

**COC, GOC, XOC** (also called C, G, X, herein) are yellow cans or balls on the Olympic Circle

Missing marks will be replaced with inflatable Club marks.

**16.0 OTHER:** The Berkeley Yacht Club web site ([www.berkeleyyc.org/race/](http://www.berkeleyyc.org/race/)) has a discussion of the policy used for this series regarding weather. See "The Weather and is there a race."

**17.0 SCHEDULE START TIMES & SIGNALS:** Races will be started in accordance with RRS 26. The Warning signal for each succeeding class shall be with **or** after the starting signal of a preceding class.

<b>SATURDAY:</b>			<b>MIN TO</b>			
<b>FLAG</b>	<b>CLASS DESCRIPTION</b>	<b>SIGNAL</b>	<b>START</b>	<b>TIME</b>	<b>FLAGS</b>	<b>COURSE</b>
<b>A</b>	<b>Division A (to 78)</b>	<b>Warning</b>	<b>5</b>	<b>11:55</b>	<b>Raise "A"</b>	<b>Raise Course</b>
		<b>Preparatory</b>	<b>4</b>	<b>11:56</b>	<b>Raise "P", "I"</b>	
		<b>One Minute</b>	<b>1</b>	<b>11:59</b>	<b>Drop "P", "I"</b>	<b>Drop Course</b>
		<b>Start</b>	<b>0</b>	<b>12:00</b>	<b>Drop "A"</b>	
<b>B</b>	<b>Division B (81 - 99)</b>	<b>Warning</b>				
<b>E</b>	<b>Express 27</b>	<b>Warning</b>				
<b>C</b>	<b>Division C (102 – 141)</b>	<b>Warning</b>				
<b>D</b>	<b>Division D (144 – 168)</b>	<b>Warning</b>				
<b>F</b>	<b>Division F (171 &amp; up)</b>	<b>Warning</b>				
<b>K</b>	<b>Cal 20</b>	<b>Warning</b>				

<b>SUNDAY:</b>			<b>MIN TO</b>			
<b>FLAG</b>	<b>CLASS DESCRIPTION</b>	<b>SIGNAL</b>	<b>START</b>	<b>TIME</b>	<b>FLAGS</b>	<b>COURSE</b>
<b>A</b>	<b>Division 1 (to 129)</b>	<b>Warning</b>	<b>5</b>	<b>11:55</b>	<b>Raise "A"</b>	<b>Raise Course</b>
		<b>Preparatory</b>	<b>4</b>	<b>11:56</b>	<b>Raise "P", "I"</b>	
		<b>One Minute</b>	<b>1</b>	<b>11:59</b>	<b>Drop "P", "I"</b>	<b>Drop Course</b>
		<b>Start</b>	<b>0</b>	<b>12:00</b>	<b>Drop "A"</b>	
<b>E</b>	<b>Express 27</b>	<b>Warning</b>				
<b>B</b>	<b>Division 2 (132 &amp; up)</b>	<b>Warning</b>				
<b>D</b>	<b>Doublehand</b>	<b>Warning</b>				
<b>F</b>	<b>Singlehand</b>	<b>Warning</b>				

**IT SHALL BE THE SOLE RESPONSIBILITY OF EACH YACHT TO DECIDE WHETHER OR NOT TO START OR TO CONTINUE TO RACE.**

Race Committee: Robert B. Gray: [r\\_gray40@sbcglobal.net](mailto:r_gray40@sbcglobal.net) or (510) 530-4162; Bobbi Tosse: [Bobbi@jfcbat.com](mailto:Bobbi@jfcbat.com) or (925) 939-9885